



## MINI ARMS for ERGO II CRUISE MOUNTS

### 4071

### PARTS INCLUDED

- 2 Mini Arms for Ergo II Cruise Mounts
- 1 Hardware Kit Containing:
  - 2 1/2"-13 x 3/4" Socket Head Cap Screw
  - 2 Spacers—**for board installation**
  - 2 Flat Washers—**for board installation**
- 1 Installation Instructions

Please read and understand entire instructions before starting installation.

### THANK YOU FOR CHOOSING KÜRYAKYN!

**IN ORDER TO PROTECT YOU AND OTHERS FROM POSSIBLE INJURY AND/OR PROPERTY DAMAGE OR LOSS, PLEASE PAY CLOSE ATTENTION TO ALL INSTRUCTIONS, WARNINGS, CAUTIONS AND NOTICES REGARDING THE USE AND CARE OF THIS PRODUCT.**

#### WARNING

**THIS INDICATION ALERTS YOU TO THE FACT THAT IGNORING THE CONTENTS DESCRIBED HEREIN CAN RESULT IN POTENTIAL DEATH OR SERIOUS INJURY.**

#### NOTICE

**This indication alerts you to the fact that ignoring the contents described herein may negatively affect product performance and functionality.**

#### NOTICE

**IF INSTALLING THIS PRODUCT FOR ANOTHER PARTY, PLEASE MAKE SURE THEY RECEIVE THIS COPY OF THE INSTALLATION INSTRUCTIONS SO THEY ARE AWARE OF THE IMPORTANT INFORMATION CONTAINED IN THEM.**

### TOOLS SUGGESTED

Set of Hex Wrenches, Socket Set with Ratchet

**STRICTLY OBSERVE THE FOLLOWING GUIDELINES IN ORDER TO USE THE PRODUCT PROPERLY AND AVOID POTENTIALLY DANGEROUS ACCIDENTS.**

- STEP 1** Read and understand all steps in the instructions before starting the installation. Park the motorcycle on a hard, level surface and turn off the ignition. Let cool.

#### WARNING

**YOU WILL BE WORKING AROUND THE ENGINE AND EXHAUST SYSTEM DURING INSTALLATION. ENSURE THAT THE ENGINE AND EXHAUST SYSTEM HAVE FULLY COOLED TO PREVENT INJURY.**

### FOR INSTALLATION WITH FOOTPEGS

- STEP 2** Remove screw that secures the clevis and peg assembly to the arm, this screw will not be used again. PIC 1
- STEP 3** Remove screw that secures the arm to the cruise mount and set aside to install later. PIC 1

### CUSTOMER SERVICE

877.370.3604 (toll free)

### INSTALLATION QUESTIONS

techsupport@kuryakyn.com  
or call 715.247.2983

### LIMITED WARRANTY

Kuryakyn warrants that any Kuryakyn products sold hereunder, shall be free of defects in materials and workmanship for a period of one (1) year from the date of purchase by the consumer excepting the following provisions:

- Kuryakyn shall have no obligation in the event the customer is unable to provide a receipt showing the date the customer purchased the product(s).
  - The product must be properly installed, maintained and operated under normal conditions.
  - Kuryakyn makes no warranty, expressed or implied, with respect to any gold plated products.
  - Kuryakyn shall not be liable for any consequential and incidental damages, including labor and paint, resulting from failure of a Kuryakyn product, failure to deliver, delay in delivery, delivery in nonconforming condition, or for any breach of contract or duty between Kuryakyn and a customer.
- Kuryakyn products are often intended for use in specific applications. Kuryakyn makes no warranty if a Kuryakyn product is used in applications other than intended.
- Kuryakyn electrical products are warranted for one (1) year from the date of purchase by the consumer. L.E.D.'S contained in components of Kuryakyn products will be warranted for defects in materials and workmanship for 3 years from the date of purchase where as all other components shall be warranted for one(1) year. This includes, but is not limited to; control modules, wiring, chrome & other components.
- Kuryakyn makes no warranty of any kind in regard to other manufacturer's products distributed by Kuryakyn. Kuryakyn will pass on all warranties made by the manufacturer and where possible, will expedite the claim on behalf of the customer, but ultimately, responsibility for disposition of the warranty claim lies with the manufacturer.

### ABOUT OUR CATALOG

For purchasing Kuryakyn® products, you can receive a complete catalog free of charge. Send the Proof-of-Purchase below with your address to: Kuryakyn, P.O. Box 339, Somerset, WI 54025. Please indicate either Accessories Catalog for Harley-Davidson® or GL & Metric Cruisers.

Be sure to ask your local dealer about other Kuryakyn® products, the motorcycle parts and accessories designed for riders by riders.

©2005 Kuryakyn USA® All Rights reserved.



kuryakyn.com

**NOTE: Mini Arms are suggested to be mounted above engine guard to avoid a great reduction in cornering clearance. FIG 1**

**STEP 4** Insert one the 1/2"-13 x 3/4" Socket Head Cap Screw through the back of the Mini Arm and thread it into the clevis. Make sure the roll pins in the clevis line up with holes on the Mini Arm. PIC 2 The roll pins will be pressed in as you tighten the clevis. Leave finger tight for now.

**WARNING** FOOTPEGS MUST BE INSTALLED SO THEY WILL FOLD UPWARD AND REARWARD IF HIT BY ANY OBJECT. FAILURE TO ADJUST THE FOOTPEGS TO OPERATE IN THIS MANNER COULD RESULT IN SERIOUS INJURY OR DEATH.

**STEP 5** Place the Mini Ergo Arm on the cruise mount. Secure with the screw that was removed in STEP 3. PIC 3

**STEP 6** Repeat STEP 2 through STEP 5 for the other side. Proceed to Step 13.

**NOTICE** It is the installer's responsibility to ensure that all of the fasteners (including pre-assembled) are tightened before operation of the motorcycle. Küryakyn will not provide warranty coverage on products or components lost due to improper installation or lack of maintenance. Periodic inspection and maintenance are required on all fasteners.

**FOR INSTALLATION WITH FLOORBOARDS (#4058 OR #4059)**

**STEP 7** Remove the screw that secures the floorboard assembly to the arm. Set aside to be re-used. PIC 4

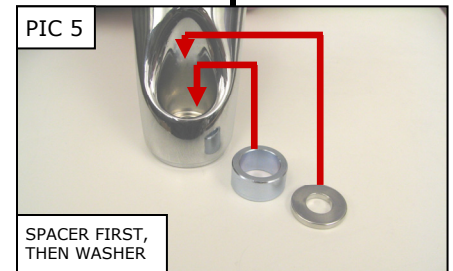
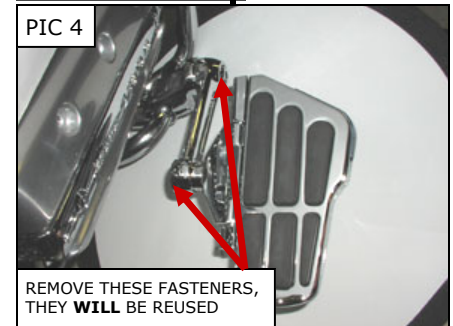
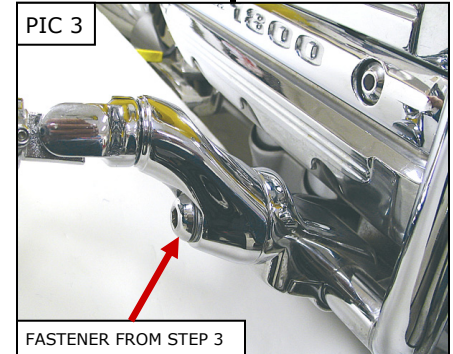
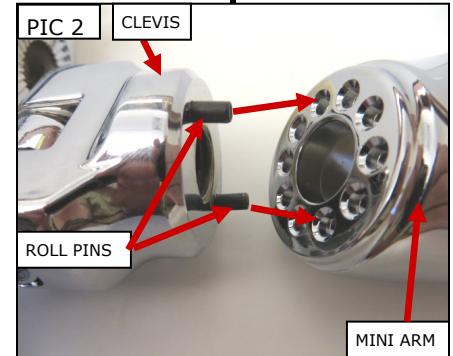
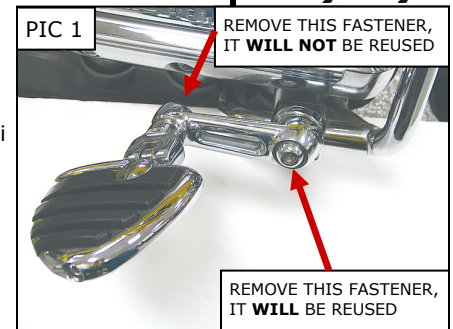
**STEP 8** Remove the screw that secures the arm to the cruise mount. Set aside to be re-used. PIC 4

**STEP 9** Once you have the old arm assembly off the mount, place the floorboard on the new Mini Ergo Arm.

**STEP 10** Insert one spacer, then the washer and finally thread the bolt in to the floorboard. PIC 5

**STEP 11** Place the Mini Ergo Arm with floorboard on the cruise mount.

**STEP 12** Repeat STEP 7 through STEP 11 for the other side. Proceed to Step 13.



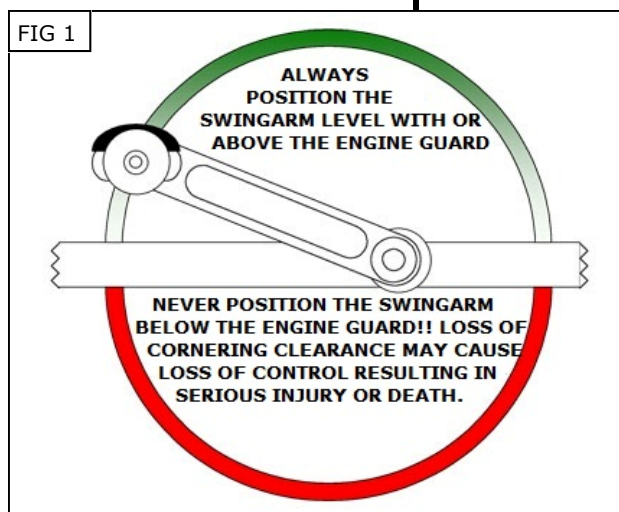
**STEP 13 Adjust for Longer or Shorter Inseam Lengths:**

- Loosen the 1/2"-13 Button Head Fastener securing the Mini Arm to the mount. Pull the Mini Arm out of the interlocking cogs.
- Rotate the Mini Arm to the desired position then push the arm back into the interlocking cogs; be sure the Mini Arm is either level with the engine guard, or above the engine guard. **NEVER position the Mini Arm below the engine guard!**  
FIG 1 Tighten the 1/2"-13 fastener securely.

**WARNING**

IT IS THE INSTALLERS RESPONSIBILITY TO ENSURE THERE IS SUFFICIENT CORNERING CLEARANCE BEFORE RIDING. ALWAYS POSITION THE MINI ARM EITHER LEVEL WITH, OR ABOVE THE ENGINE GUARD. POSITIONING THE MINI ARM BELOW THE ENGINE GUARD WILL GREATLY DECREASE CORNERING CLEARANCE WHICH MAY CAUSE LOSS OF CONTROL RESULTING IN SERIOUS INJURY OR DEATH.

FIG 1

**STEP 8 Adjust the Clevis Angle:**

- Loosen the 1/2-13 Hex Head Fastener securing the Mini Arm to the clevis. Pull outward on the clevis and peg to clear the roll pins.
- Rotate the clevis and peg assembly to the desired angle then push the assembly back into the Mini Arm, making sure the roll pins in the clevis line up with the holes on the Mini Arm, and re-tighten the fasteners securely.

**NOTICE**

It is the installer's responsibility to ensure that all of the fasteners (including pre-assembled) are tightened before operation of the motorcycle. Küryakyn will not provide warranty coverage on products or components lost due to improper installation or lack of maintenance. Periodic inspection and maintenance are required on all fasteners.