

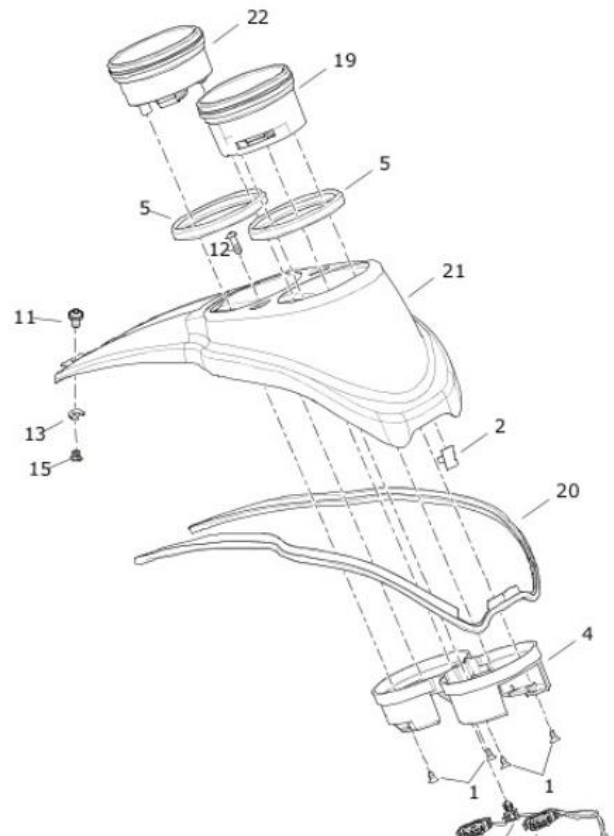
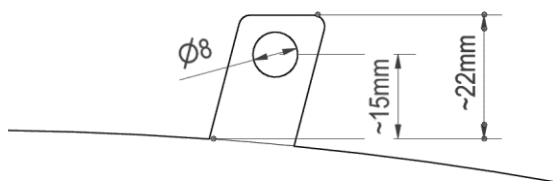
Dismantle the original Dash Cover

1. remove seat
2. loosen screws (11 & 12) and lift dashcover.
3. disconnect speedometer and tachometer and put away the original dashcover - the original gasket (20) is used again.

Fitting the Dash Cover from Cult-Werk

To fit the dashcover, it is necessary to shorten and drill the original bracket on the tank.

TIP: let the mounting bracket rest on the tank and place it against the original tabs, then mark the drill hole.



1. fix the supplied fixing bracket to the shortened tabs with the screws (M6x16). 2.
2. Fit the original gasket on the Cult-Werk dash cover.
3. fix the dash cover - at the rear with the original screw (11), at the front with the M6x12 screw.

on the mounting bracket

Tightening torque: 4 to 7Nm

We recommend using a medium-strength screw lock (e.g. LOCTITE 243, blue) for all screws.



Abb. 1 - mounted mounting bracket